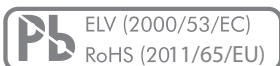


Product description

MAIN FEATURES

HIGH RESOLUTION SERIES AUDIO ATTENUATOR WITH 47 POSITIONS

- › 47 positions with selectable end stops
- › Low profile: 36 x 36 mm
- › Up to 6 channels
- › Available with pre-populated thin-film SMT resistors or non-populated THT versions
- › 600 ohm, 10 k , 25 k, 50 k or 100 k ohm standard input impedances
- › Exceptional sonic performance with precise switch feel
- › Low-bounce contact system with 3 µm gold plating
- › Free Excel resistor calculator tool available



PRODUCT VARIETY

- Two-channel SMT version
- Two-channel THT version (supplied non-populated)

POSSIBLE CUSTOMIZATIONS

- Shafts, concentric construction

DESCRIPTION

The A47 audio switch series incorporates a PCB based switch contact system that is specifically designed to meet audioophile requirements for superb sonic performance. These series attenuators provide 47 positions and are available from 1 to 6 channels. Switch torques of 1.5, 2.5 and 5 Ncm are available standard, populated with low-noise, high precision SMT resistors (standard input impedances are 600 ohm, 10 k, 25 k, 50 k or 100 k ohm) or non-populated THT versions (can be populated by the customer).

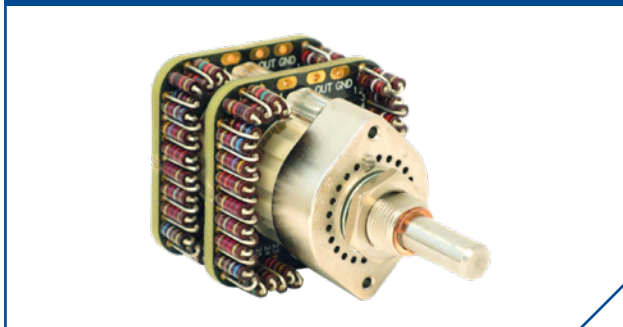
The A47 series feature Elma's hallmark indexing feel for superior tactile feedback.

* Pictured with resistors, is supplied non-populated

SERIES A47 two-channel SMT version



SERIES A47 two-channel THT version*

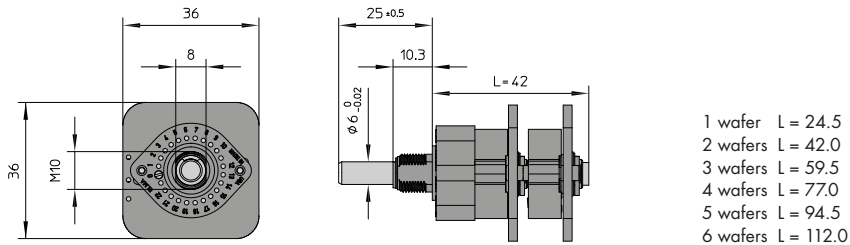


TYPICAL APPLICATIONS

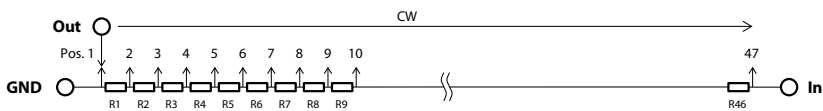
- Mixing desks and outboard studio equipment
- Home audio and home theater

Dimensions, pin assignment and circuit diagram

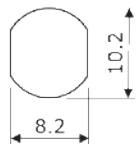
SWITCH DESIGN



PIN ASSIGNMENT AND CIRCUIT DIAGRAM

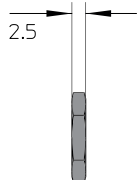
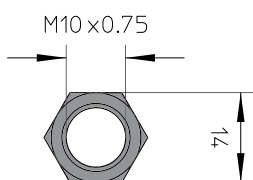


FRONT PANEL CUT OUT

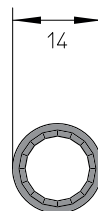


NUT

HEX NUT



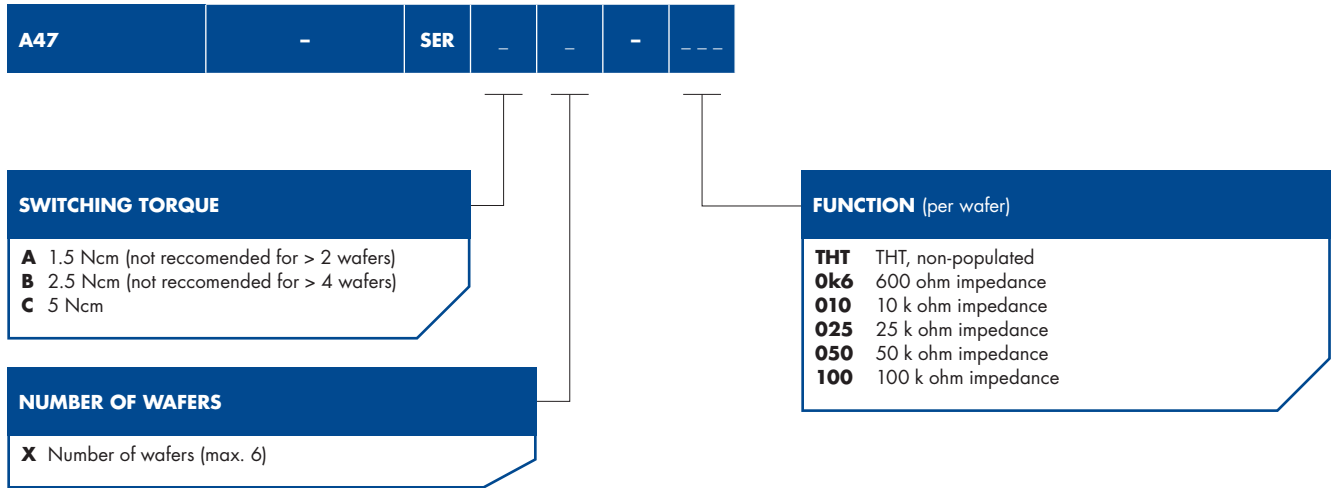
LOCK WASHER



Dimensions in mm
Tolerances according to DIN ISO 2768-1 (m), unless otherwise specified

Ordering information

ORDERING CODE



PACKAGING

Single piece packed, lock washer and two nuts are included

ACCESSORIES AND SPARE PARTS

Spare nut: Part number 5622-16
 Stop screws: 10 pieces / bag, part number 4124-21

SPECIFICATIONS

GENERAL

Indexing resolution:	47 positions (7.5° indexing 345° total switch travel)
Switching torque:	1.5, 2.5 or 5 Ncm (±30 % over temperature range and life)
Rotational life:	25'000 cycles (over temperature range, at 120 RPM)
Contact system:	Low-bounce wiper with 3 µm hard gold plated PCB
SMT resistors:	0805 package, thin-film, ±0.1 %, TCR; ±25 ppm / °C
THT resistors:	Non-populated, max. package size, $\text{Æ}2.8 \times 10 \text{ mm}$ ($\text{Æ}0.6 \text{ mm}$ wire)
Input impedance:	10 k, 25 k, 50 k, 100 k or 600 ohm

DB ATTENUATION (SERIES TYPE ATTENUATORS)

SWITCH POSITION	1	2	3	4	5	6	7	8	9	10	...	47
Attenuation (dB)	Off	-72	-69	-66	-64	-62	-60	-58.5	-57	-55.5	...	0
Step size (dB)		3	3	2	2	2	1.5	1.5	1.5	...	1.5	...

©Copyright 2018 by Elma Electronic AG, CH-8620 Wetzikon. Subject to technical modifications, all data supplied without liability.

Please contact our sales team for more details.

China: +86 21 5866 5908 Germany: +49 7231 97 34 0 Singapore: +65 6479 8552 United Kingdom: +44 1234 838 822
 France: +33 388 56 72 50 Israel: +972 3 930 50 25 Switzerland: +41 44 933 41 11 United States: +1 510 656 3400