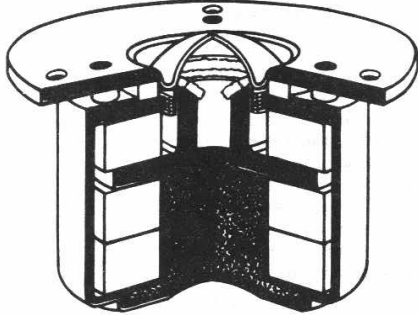


# MDT 33

## Wide Range Tweeter



An excellent hand-treated soft dome tweeter, extremely fast, using a replaceable, self-centering diaphragm assembly, incorporating flexible wire termination.

Morel unique double magnet system vented into an enhanced suitably damped rear chamber, allowing very low resonance and freedom from "honking" at the lower operating frequencies.

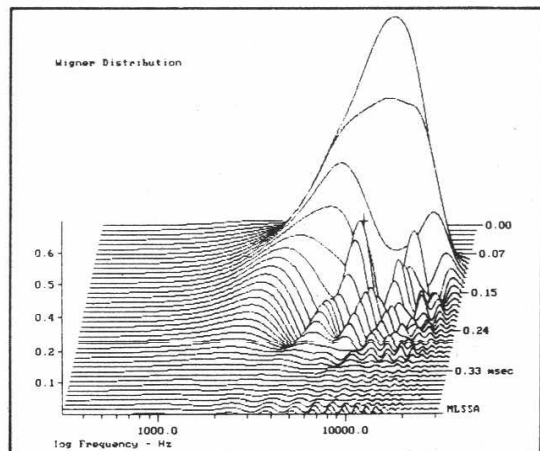
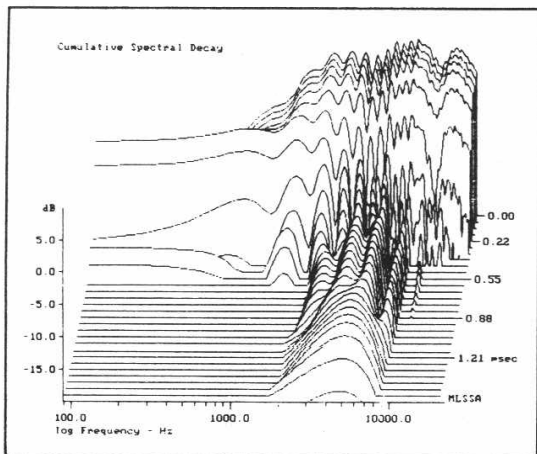
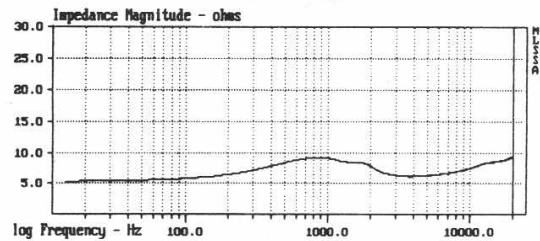
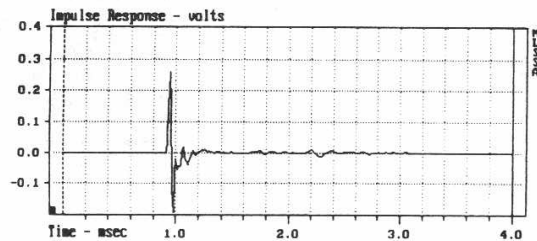
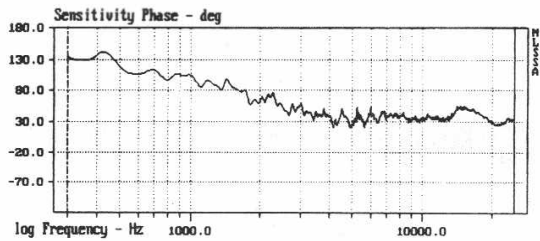
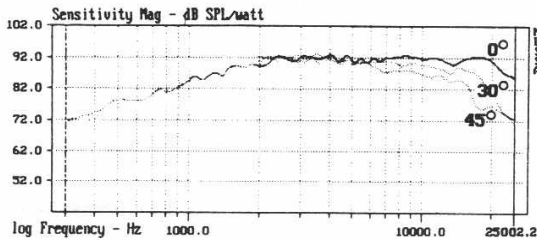
Aluminium voice coil — liquid cooled high power handling — high sensitivity — low distortion — smooth extended excellent on and off axis frequency response.

A very high dynamic range without compression of sound pressure level. Packed in matched pairs.

### Specification

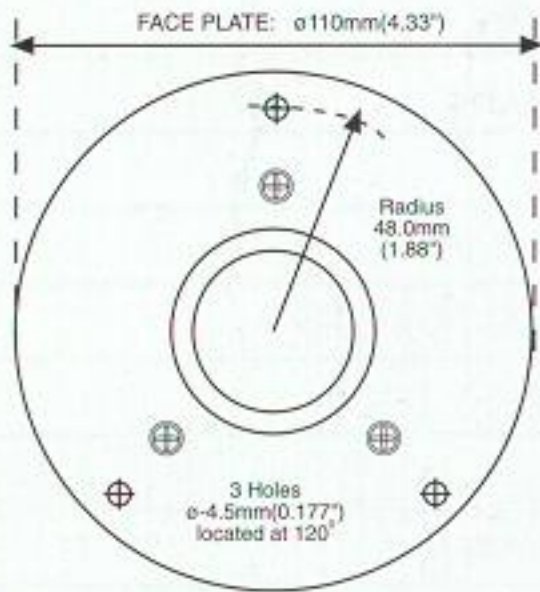
Overall Dimensions	4.3" × 66mm(2.6")
Nominal Power Handling (Din)	200 W
Transient Power — 10ms	1000 W
Voice Coil Diameter	28mm(1.125")
Voice Coil Type / Former	Hexatech Aluminium
Frequency Response	1800 – 20000 Hz ± 0.6 dB
FS — Resonant Frequency	700 Hz ± 10%
Sensitivity 1W/1M	92.5 dB
Z — Nominal Impedance	8 ohms
RE — DC Resistance	5.2 ohms
Harmonic Distortion for 96 dB SPL	<0.8%
Intermodulation Distortion for 96 dB SPL	<0.2%
LBM — Voice Coil Inductance @ 1 KHz	0.09 mh
Magnetic Gap Width	0.75mm(0.029")
HE — Magnetic Gap Height	2.5mm(0.098")
Voice Coil Height	2.7mm(0.106")
B — Flux Density / BL Product (BXL)	1.95 T / 6.3 NA
Qms — Mechanical Q Factor	0.159
Qes — Electrical Q Factor	0.195
Q/T — Total Q Factor	0.088
Vas — Equivalent Gas Air Load	0.01 litres
MMS — Moving Mass	0.44 gm
SD — Effective Cone/Dome Area	6.0 cm <sup>2</sup>
Cone/Dome Material	Hand Treated Selected Fabric
Nett Weight	1.2 kg

Specifications given are as after 24 hours of running.

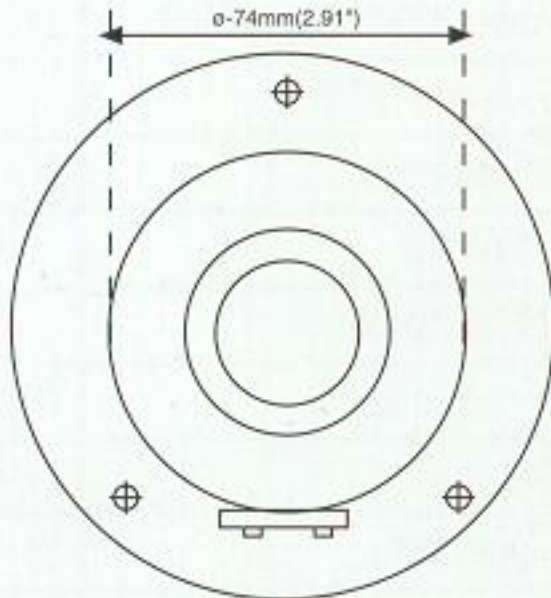


# MDT 33

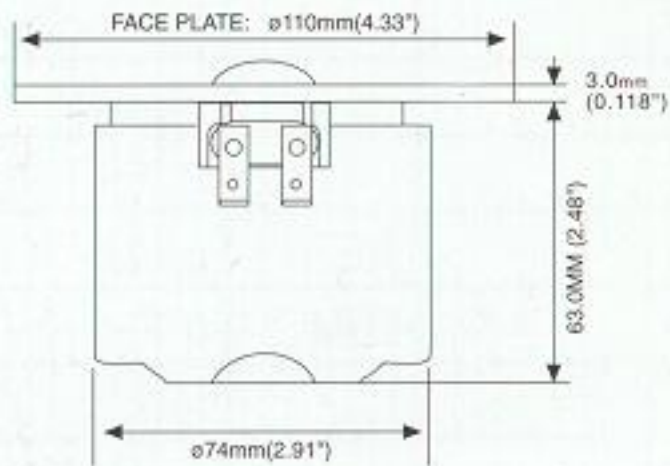
## MDT 33



FACE VIEW



REAR VIEW



PROFILE