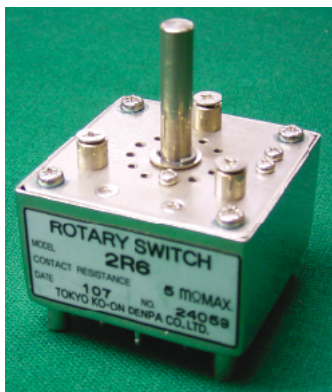
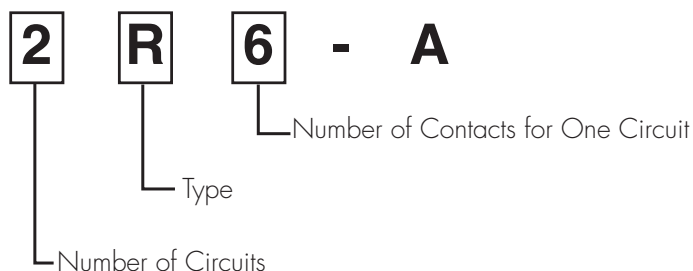


2R6-A SERIES



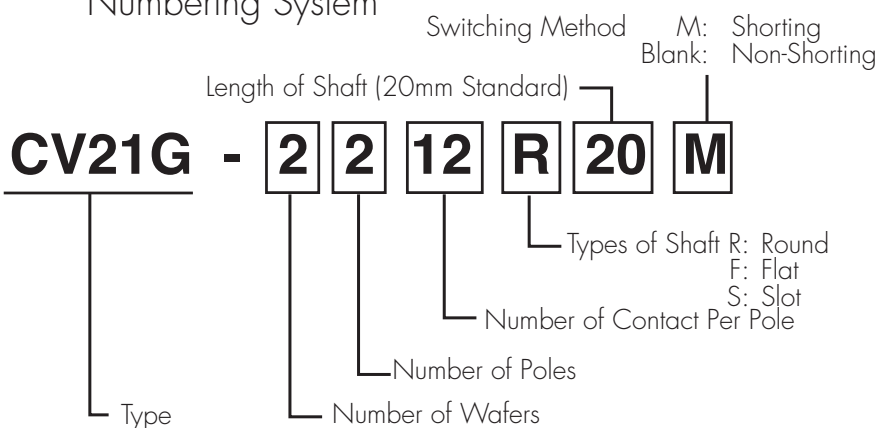
Numbering System



CV21G SERIES



Numbering System



Specifications

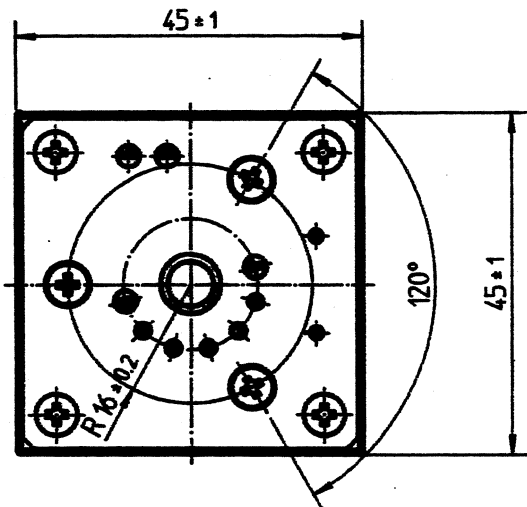
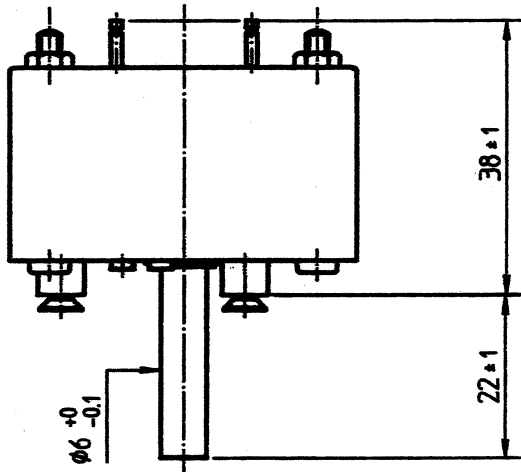
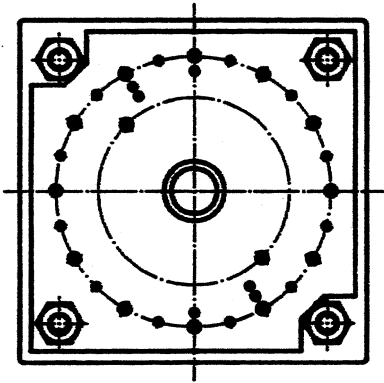
Model

Number of Wafers
 Number of Poles(Ways)
 Number of Contacts Per Pole
 Contact Resistance
 Contact Rating (Max.)
 Contact Material
 Indexing Angle
 Changeover Timing
 Insulating Material
 Insulating Resintance (Contact : Frame)
 Proof Voltage (Contact : Frame)
 Life (Cycles)

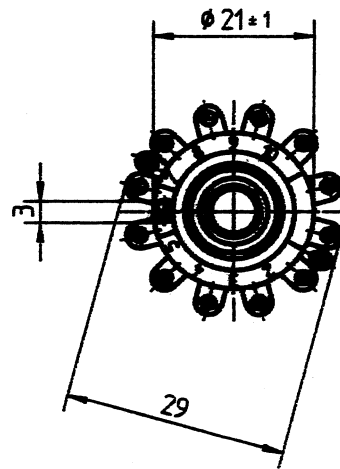
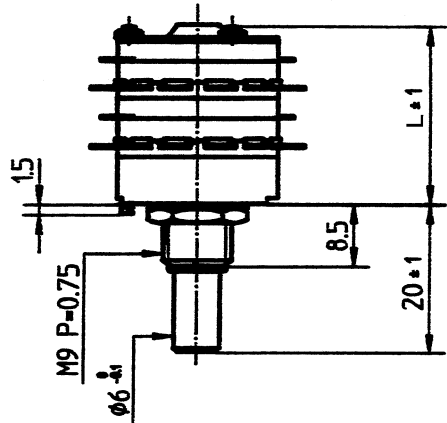
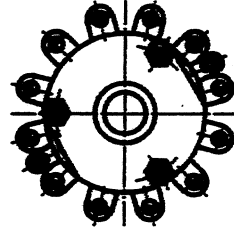
2R6-A SERIES				CV21G SERIES	
2R6-A	4R6-A	2R12-A	4R12-A	CV21G-2212R20	CV21G-4412R20
1	2	2	4	2	4
2	4	2	4	2	4
6		12			
≤5mΩ				≤15mΩ	
AC 100V 1A				AC 60V 0.1A	
Solid Ag				Au Plating	
30°					
Non-Shorting					
Phenol					
≥100MΩ at DC 1,000V				≥100MΩ at DC 500V	
AC 1,000V				AC 500V	
≥30,000				≥10,000	

Dimensions

2R6A (Other types omitted)



CV21G Series



	1	2	3	4
L(mm)	16.5	24	31.5	39